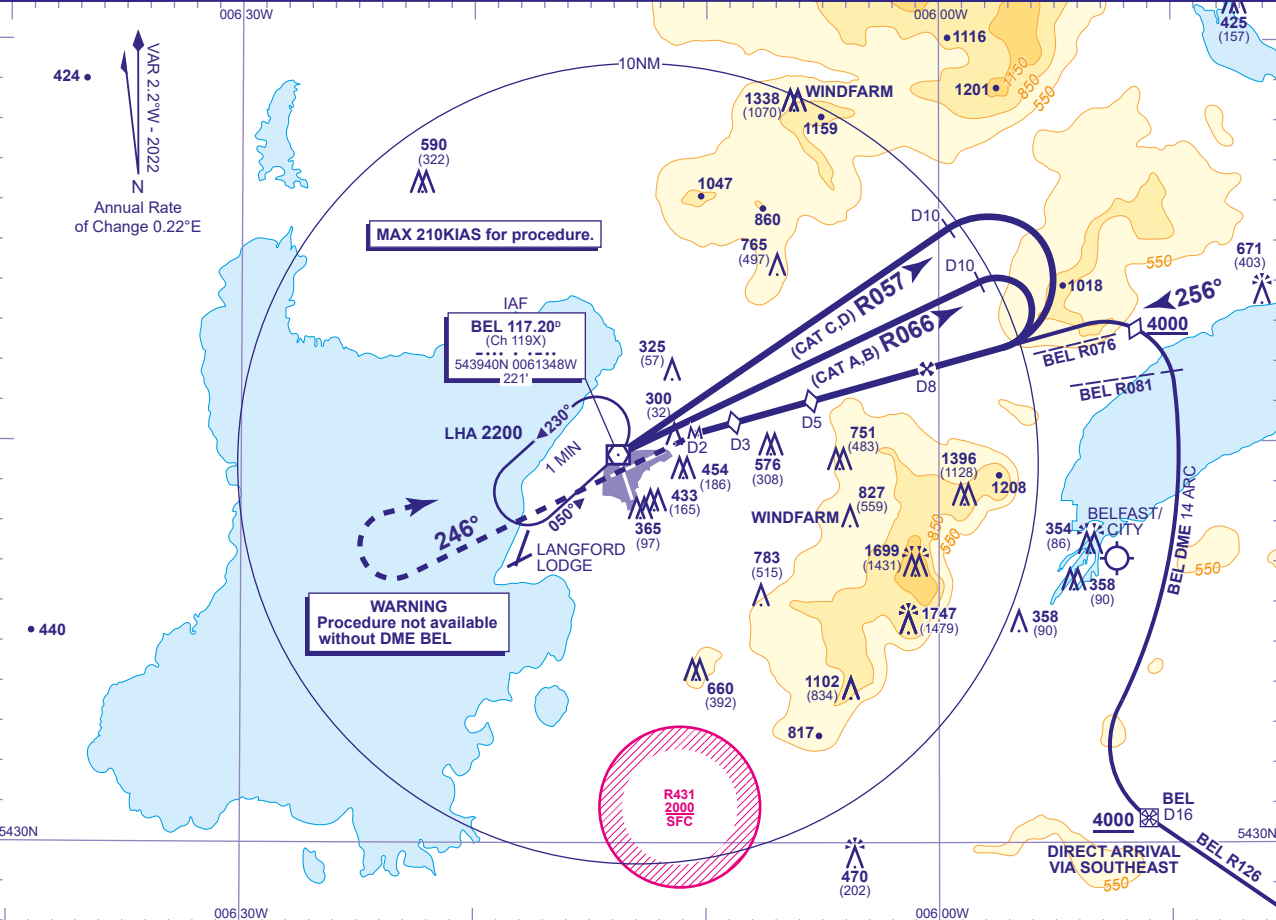


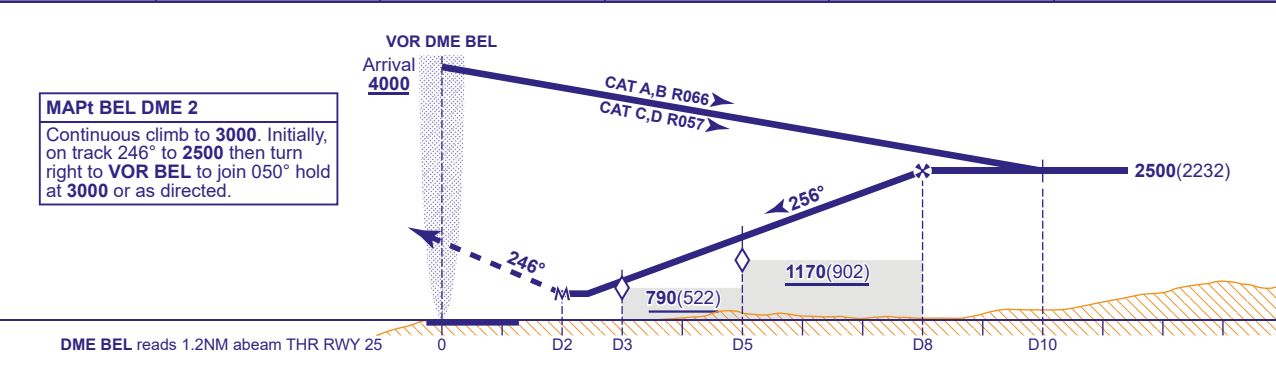
INSTRUMENT APPROACH CHART - ICAO

BELFAST ALDERGROVE

<div><div><div>33</div><div>30</div><div>090°</div><div>270°</div><div>34</div><div>35</div><div>180°</div><div>060°</div></div><div>MSA 25NM VOR BEL</div></div>	APP 133.125	ALDERGROVE APPROACH	AD ELEVATION 268	VOR/DME RWY 25 (ACFT CAT A,B,C,D)
	TWR 118.300	ALDERGROVE TOWER	THR ELEVATION 268	
	RAD 120.905	ALDERGROVE DIRECTOR	OBSTACLE ELEVATION 1747 AMSL (1479) (ABOVE THR)	
	ATIS 126.130	ALDERGROVE INFORMATION	BEARINGS ARE MAGNETIC	
				TRANSITION ALTITUDE 6000



RECOMMENDED PROFILE Gradient 5.26%, 320FT/NM					
DME BEL	7	6	5	4	3
ALT(HGT)	2180(1912)	1860(1592)	1540(1272)	1220(952)	900(632)



Aircraft Category		A	B	C	D	Rate of descent	G/S KT	160	140	120	100	80
OCA (OCH)	Procedure	700(432)	700(432)	700(432)	700(432)		FT/MIN	850	750	640	530	430
VM(C)OCA (OCH AAL)	Total Area	750(482)	840(572)	1180(912)	1290(1022)							

NOTES
1 FAT is offset 9.8° and intercepts RWY 25 extended C/L approximately 1.2NM before THR.
2 Aircraft will normally be required to hold not lower than 3000 at VOR BEL.

CHANGE (5/25): NW MSA INCREASE.

AERO INFO DATE 15 FEB 25

AD 2-EGAA-8-11